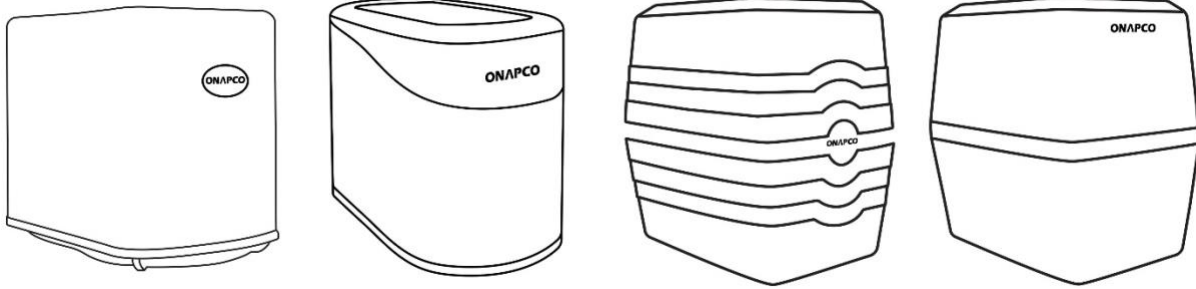


ONAPCO

USER GUIDE ONAPCO WATER FILTER DEVICE

OF-12URC01 / OF-12URC02 / OF-08URC01 / OF-08URC02



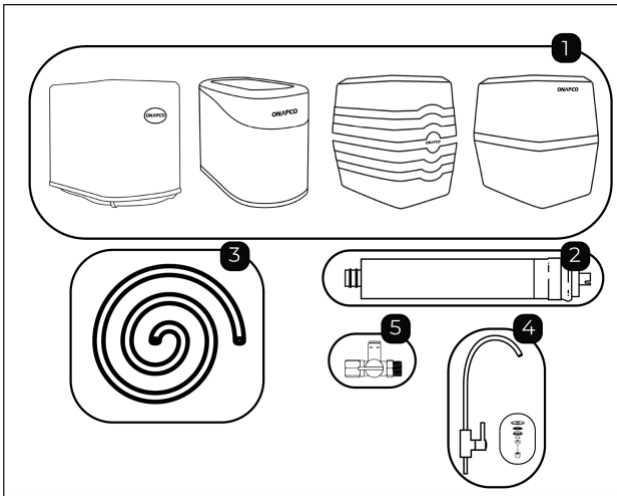
Thank you for purchasing an ONAPCO product! Please read the user manual carefully before operating. Keep this user manual for future reference.

This manual is copyrighted by ONAPCO. Under the copyright laws, this manual may not be reproduced in any form, in whole or part, without the prior written consent of ONAPCO. Manual print ver. 2.0 /2024.

Before Installation:

This guide is sufficient for the proper installation of the ONAPCO filter. If you need any assistance or further clarification, contact the technical support of the supplier from whom you purchased the filter. Upon receiving your ONAPCO water filtration device, please remove all components from the box and inspect them carefully. Ensure the following items are present and in good condition:

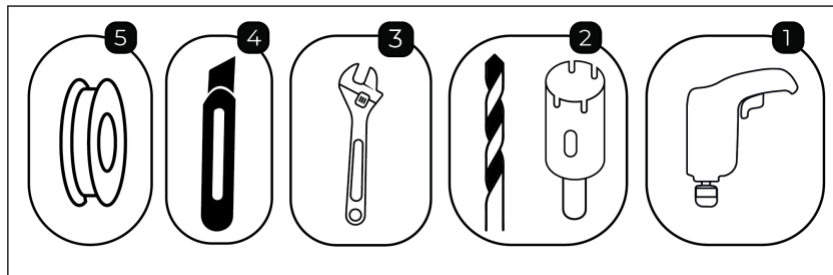
1. RO 5-stage water filtration device (the device may vary by model).
2. Membrane.
3. ¼ inch 5 meters tube.
4. Kitchen faucet.
5. T valve, ½ inch, ½ inch, ¼ inch.



* In case of any part being damaged or missing, please contact your supplier for assistance.

Installation Tools:

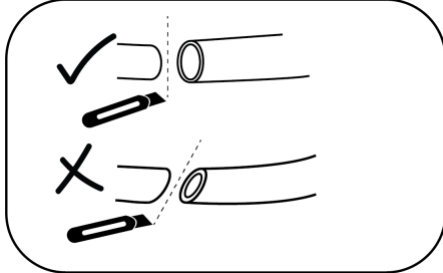
1. Variable speed drill.
2. 12 mm drill bit (the type of bit may vary depending on the kitchen surface material).
3. Adjustable wrench (Adjustable wrench is preferred).
4. Cutter.
5. Teflon.



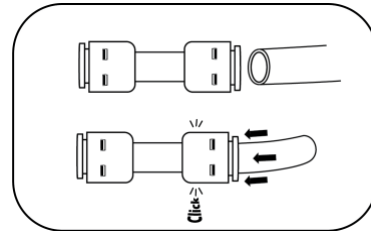
Installation Steps:

General Information:

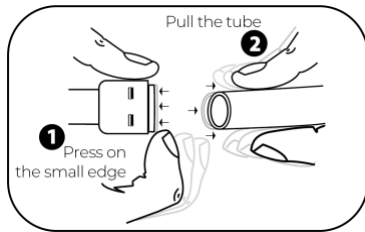
- Avoid angled cuts.



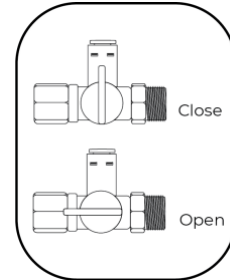
- When inserting the tube into the quick-connect entries, push it all the way until you hear a 'click' sound.



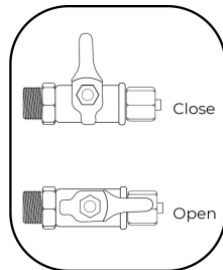
- To remove the hose from quick-connect entries, press the tab and pull as shown.



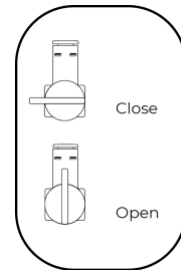
- If you are using Plastic T valve, open and close as shown.



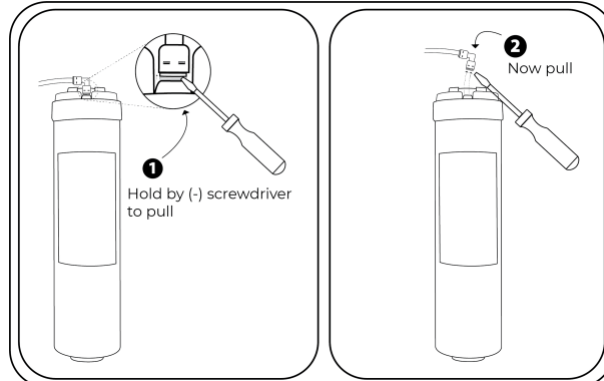
- If you are using Metal T valve, open and close as shown.



- Tank valve, open and close as shown.



- To separate the filter stage, use a (-) screwdriver and insert it under the tab as shown, then pull the connection all the way up.

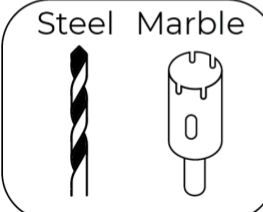


Faucet Installation:

1

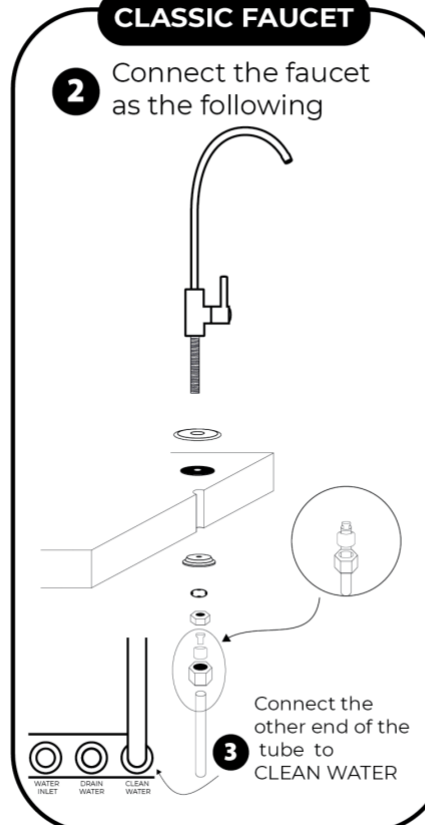
Use 12 mm drill bit to drill a hole for the faucet
Make sure to use the right drill bit depend on surface type

Steel Marble



CLASSIC FAUCET

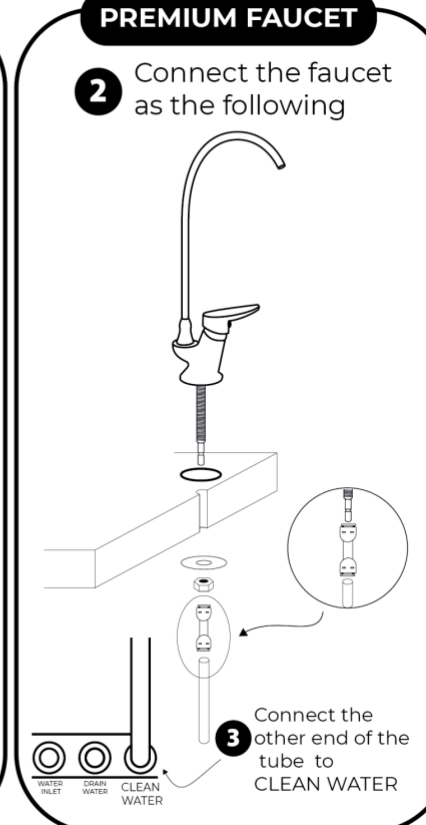
2 Connect the faucet as the following



3 Connect the other end of the tube to CLEAN WATER

PREMIUM FAUCET

2 Connect the faucet as the following

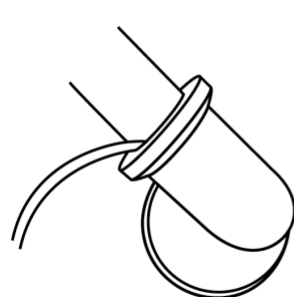


3 Connect the other end of the tube to CLEAN WATER

Drain Tube Installation:

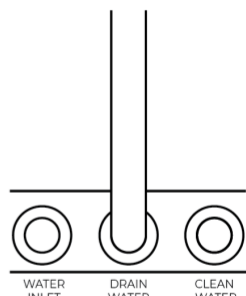
1

Connect the tube with drain source

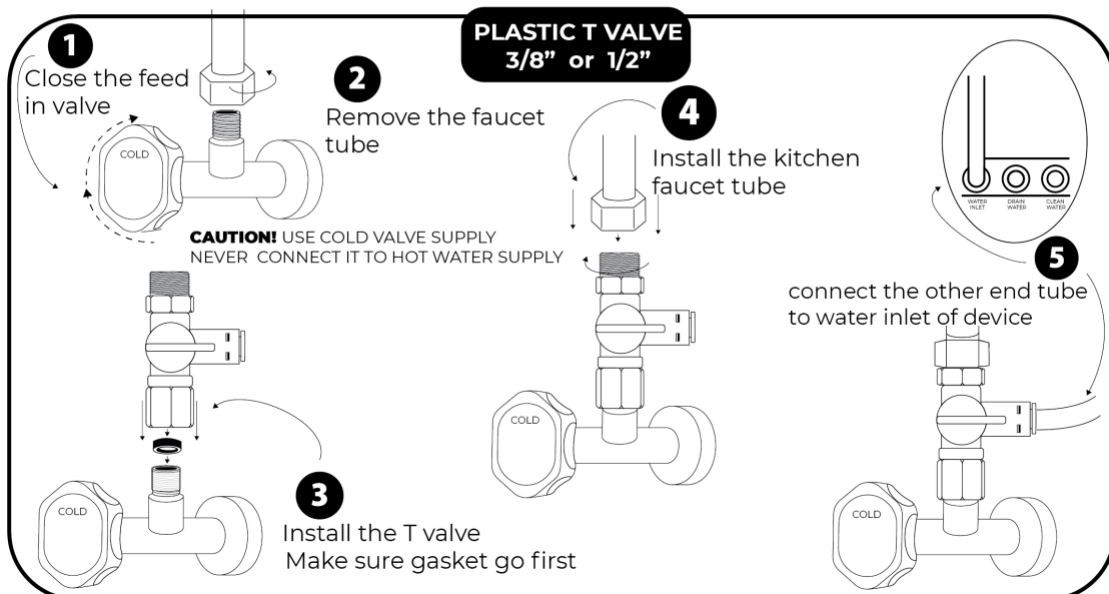
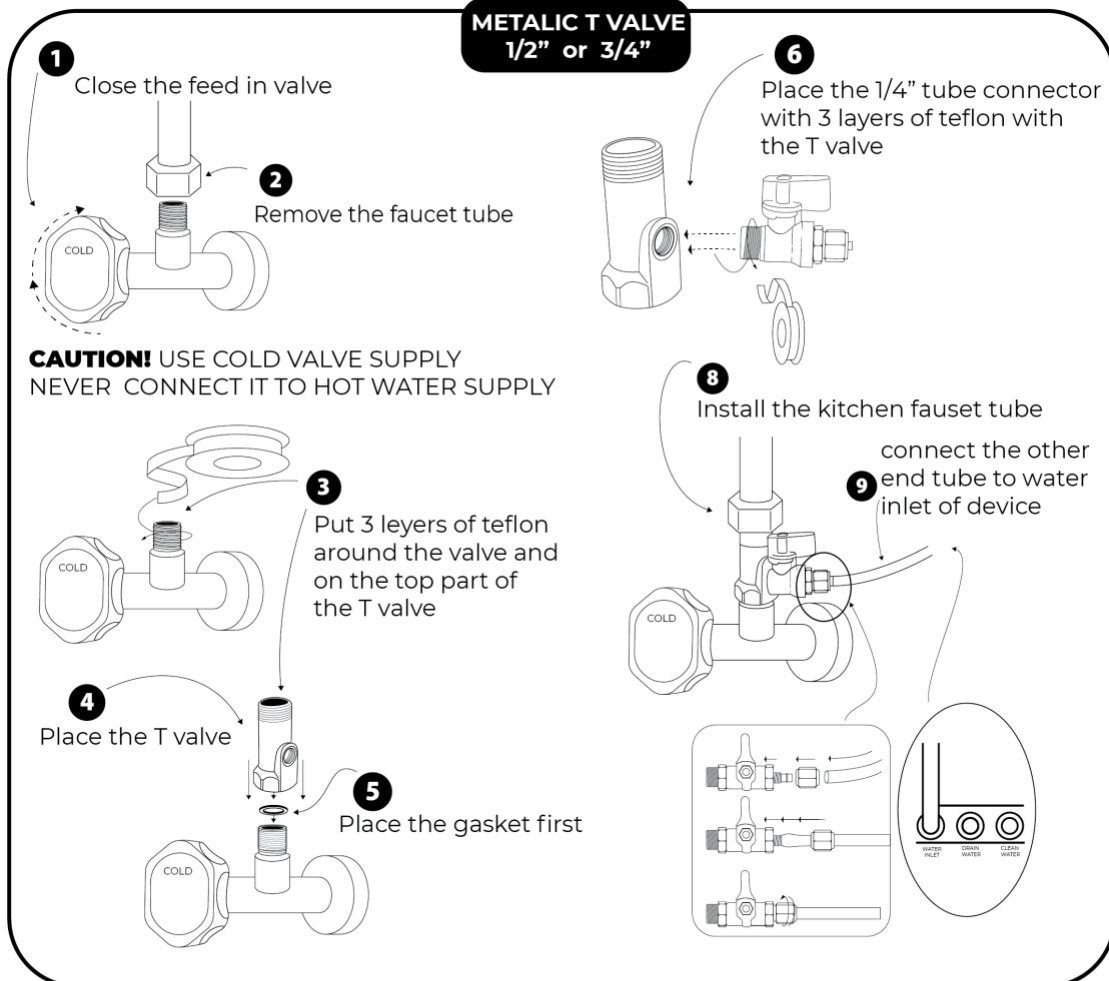


2

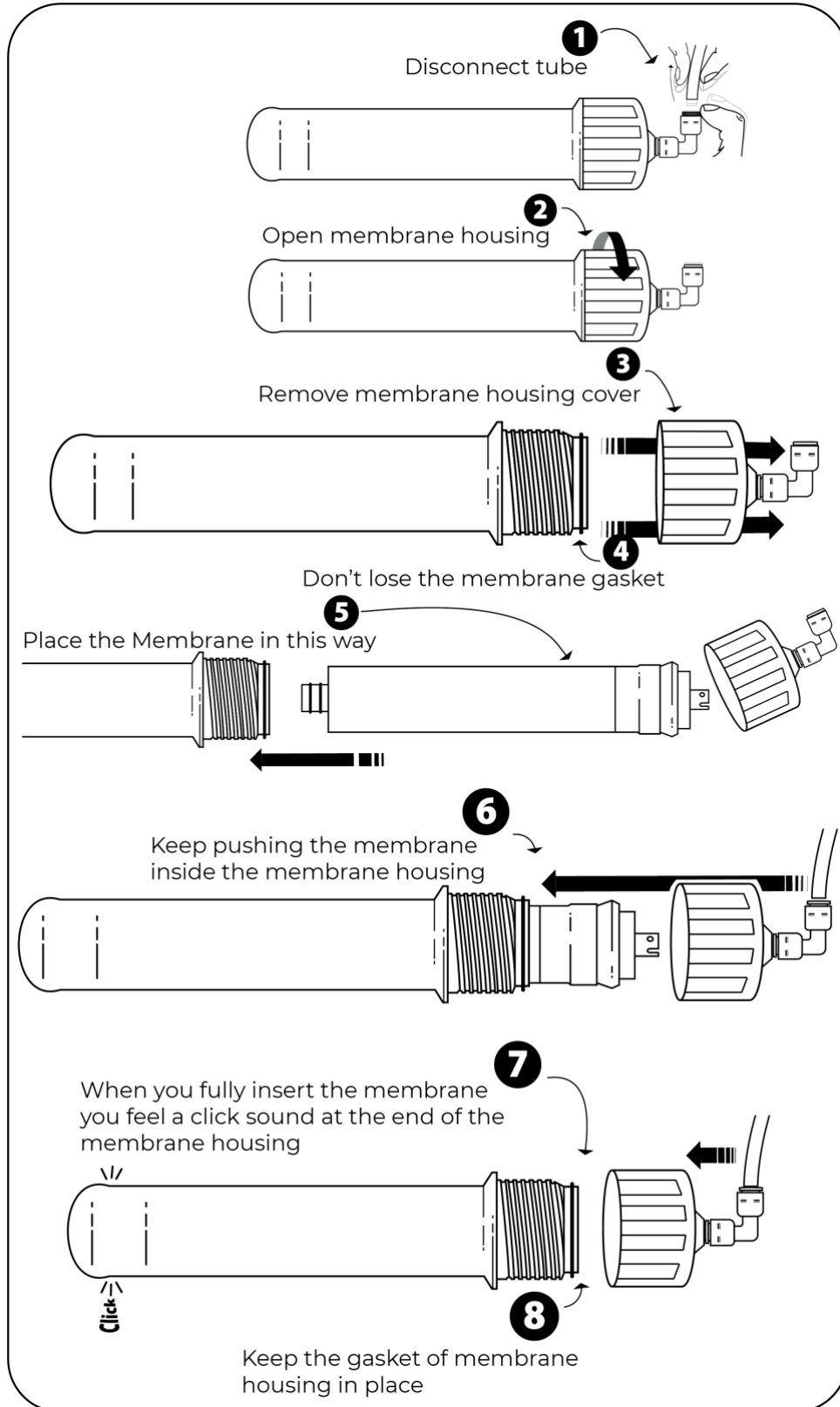
Connect the other end to DRAIN WATER exit



the Three-Way Valve Installation:

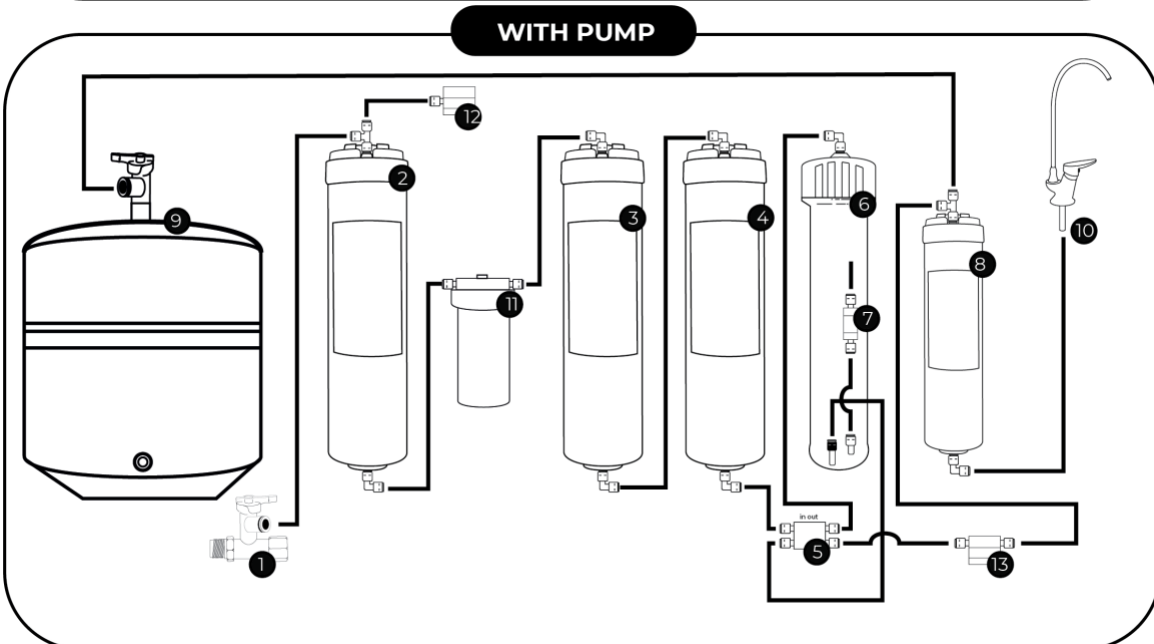
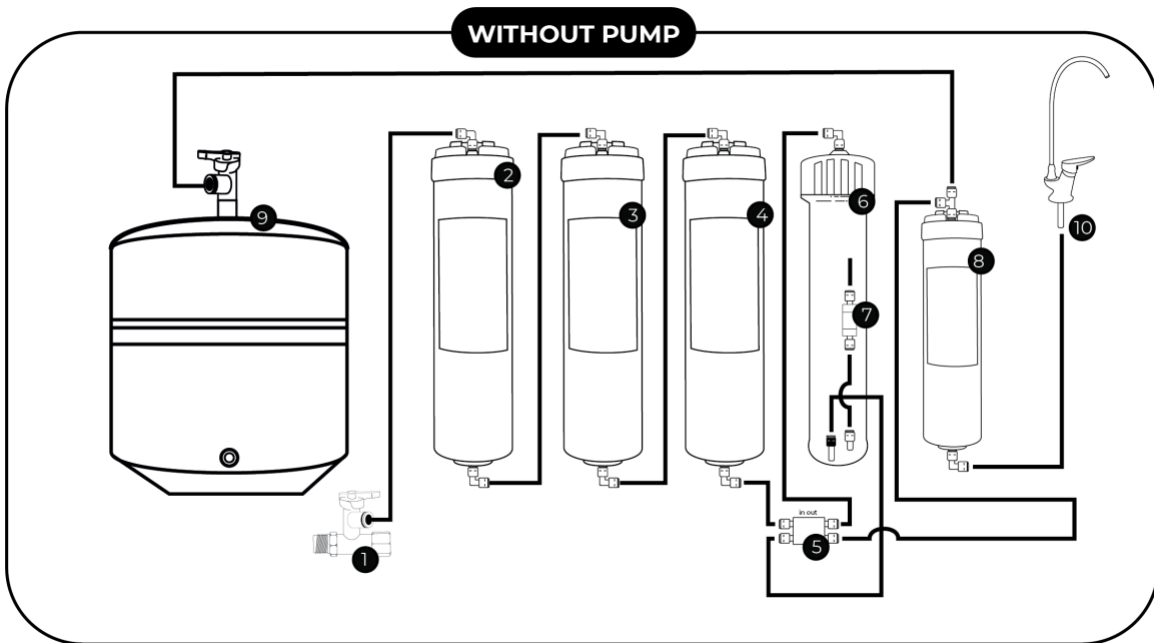


Membrane Installation:



Filter Connection Diagram:

- | | | |
|---------------------------------|---------------------|-----------------------------|
| 1. Three-way water inlet valve. | 5. Shut-off Valve. | 10. Faucet. |
| 2. First stage. | 6. Membrane. | 11. Pump. |
| 3. Second stage. | 7. Flow restrictor. | 12. Inlet water pressure. |
| 4. Third stage. | 8. Fifth stage. | 13. Tank fullness pressure. |
| | 9. Tank. | |



After Installation:

After installation, there are instructions that we hope you will follow. This is because new filters contain preservatives so that no bacteria can grow on them. It is not harmful to health, but it is recommended to wash it and clean the filter as following:

1. Make sure the tank valve is open.
2. Keep the filter tap open for an hour.
3. Close the tap.
4. Wait for an hour, then open the tap until the water flow becomes very slowly.
5. Close the tap.
6. Wait for an hour, then open the tap until the water flow becomes very slowly.
7. Repeat the process if necessary.

Operating Information:

- The water pressure required for devices with a pump: 1-4 bar. (If the water exceeds 4 bars, a water pressure regulator must be used to avoid damage).
- The water pressure required for devices without a pump: 2-4 bar. (If the water exceeds 4 bars, a water pressure regulator must be used to avoid damage).
- Feed water temperature: 5-50 degrees Celsius.
- TDS (Total Dissolved Solids) level of feed water: Maximum 1000 parts per million.
- Do not connect this device to a hot water source.
- Install the device in a protected environment and avoid exposure to hot and cold weather or direct sunlight.
- The device with a pump operates on 220 volts of electrical current.
- There must be an outlet for draining water exiting the filter (the drain tube usually enters with the sink drain).
- Filters must be changed regularly and timely to protect the device from malfunction and to continuously ensure the production of healthy water.

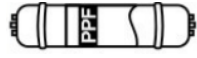

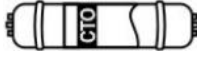
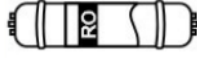

Safety Precautions:

You must ensure that electrical connections comply with the electrical systems followed in Saudi Arabia. Do not use electrical connections or cut the wire because this exposes you to danger or material damage from electricity. Connect the electricity with a fixed plug and protected against electric shocks. Handle all connections and parts with caution and care. Handle the membrane carefully to avoid damaging it.

Before you start installing the filter, close the main water valve to avoid any damage that may result from the water. Then you can open the water to verify the installation is correct or even after you have finished the installation.

Warning! Please close the water feed valve to the filter if you are not using it for more than a day, or in case of travel, prolonged absence, before making water repairs, or if any change occurs to the incoming water to the home, or in cases of extreme cold or extreme heat or water freezing situations. In addition, we ask you to completely empty the water from the device and the device's tank.

Filter Functions:

Stage Number	Filter Name	Photo	Function
First Stage	PPF		This stage filters raw and solid materials from the water. It filters tap water from impurities, sediment particles, colloids, etc., with a size of 5 microns.
Second Stage	UDF		After passing through the first filter, this stage will remove the color and odor from the water in addition to mineral particles, hydrocarbons, organic materials, and chlorine.
Third Stage	CTO		In this stage, organic materials and chlorine will be removed, producing water with a pleasant taste.
Fourth Stage	RO		The reverse osmosis membrane pore size is 0.0001 micron. In this stage, the complete removal of bacteria, viruses, heavy metals, and organic materials from the water will take place.
Fifth Stage	Post Carbon		In this stage, the complete removal of any odor and taste that may come from the pump will occur, producing pure water with a pleasant taste.

Maintenance:

Regularly replace the filter to maintain clean and pure water.

Filter Name	Change Period	Filter Name	Change Period
PPF	3-6 months	RO	12-24 months
CTO/UDF	3-6 months	Post Carbon	6-12 months
CTO/UDF	3-6 months		

The above-suggested durations are for reference only. The exact duration for replacing filters depends on the local water and the amount of water consumed. For more information on replacing filters, please contact the maintenance center.

Warranty Information:

Your ONAPCO water filter comes with a warranty covering any manufacturing defects for two years from the date of purchase. This warranty is provided to the original buyer and is not transferable. The original purchase invoice must be present.

What the warranty covers: Only electrical parts, excluding consumable parts.

Exceptions:

- Damage resulting from improper use, installation, or maintenance.
- Problems arising from abnormal wear or misuse.
- Problems due to unauthorized modifications or repairs by ONAPCO.
- Accidental damage.
- Failure to change filters regularly as recommended by ONAPCO.
- Use of non-approved parts by ONAPCO.

How to claim the warranty: Contact customer service from the supplier you purchased the device from with the purchase invoice and describe your problem.

Limitations:

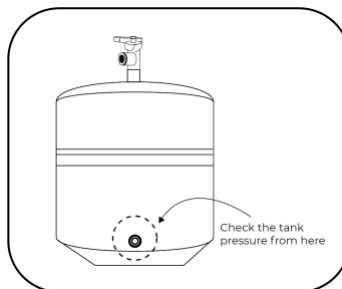
- The warranty does not cover filters or other consumable parts.
- Shipping costs for returning the product may not be covered.

Troubleshooting:

Before contacting customer support, please refer to the following common problems and their solutions.

No water flow or slow water flow:

- Check that the three-way connection valve is fully open.
- Check the filters to make sure there is no clogging. Disconnect the tube after each stage and make sure the water flows normally.
- Make sure the pump is working.
- Make sure the device is connected to 220 volts electricity.
- Make sure the faucet is working properly.
- Ensure all tubes are properly placed and there is no twisted tube.
- Check the water supply pressure to the filter.
- If the water flow is weak, check the tank pressure and inflate it to 7 PSI.



Water leakage around the filter:

Ensure all connections are tight and the seals (O-rings) are properly placed.